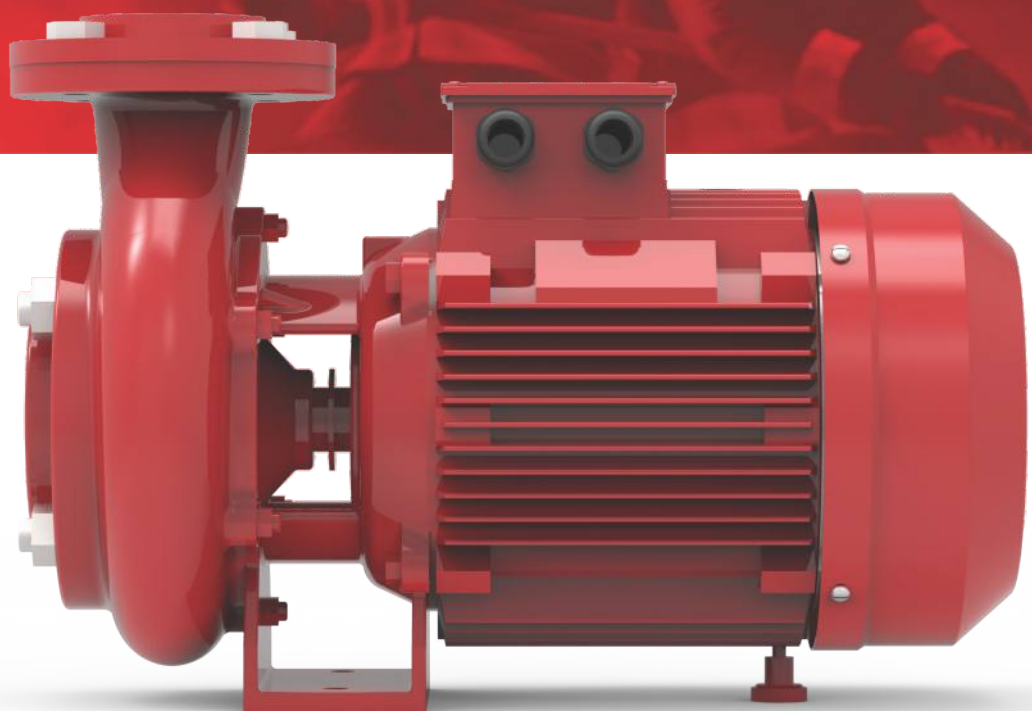


FLB SERIES

FIRE MONOBLOCK PUMP 50 Hz





When it comes to the science of pumping, Lubi pumps present smart, sturdy and sustainable pumping solutions with over 50 years of unmatched experience and expertise for applications in the Centrifugal Pump industry.

We have nine state of the art modern, high technology, manufacturing facilities in India comprising of more than 350,000 square meter of floor area to manufacture the entire range of products offered by Lubi.

All the manufacturing facilities are ISO-9001-2008 certified for Quality Systems and ISO 14001- 2004 certified for Environment Management Systems by TUV, Germany.

We are a vertically integrated manufacturing company where starting from Design and Engineering of products to manufacturing of components, assembly, testing and final finishing and packaging is done within our various manufacturing facilities. This helps us in providing our customers with Top Quality, Competitively Priced Products delivered on time.

We export our products worldwide to more than 80 countries. We have a subsidiary company in UAE for distribution of products in Middle East.

Our aim is to provide a Comprehensive Pumping Solution to the customer with Quality Products which are Priced Competitively, delivered On Time and have the Lowest Life Cycle cost, supported by impeccable After Sales Service.

Photographs of a few Manufacturing Units



Contents

Product Data	4
Construction	5
Technical data	
FLBC/FLBB 1A, 1, 11L, 21L, 31	6
FLBC/FLBB 1H, 11H, 21H	7
FLBC/FLBB 3, 13, 23, 33, 43, 53, 63	8
FLBC/FLBB 24, 54, 64, 74	9
FLBC/FLBB 5L, 15L, 15H, 25, 35, 45, 45H, 55, 65	10
FLBC/FLBB 6, 16, 27H, 26, 37H, 36, 67, 77, 87	11
FLBC/FLBB 27L, 28, 37L, 38, 48H, 58, 58H, 59, 69	12



Product data

Fire Monoblock Pump

FLB



Introduction

The Lubi FLB series are non-self priming, horizontal, single-stage, centrifugal, end-suction pumps. Pumps are available from 2.2 to 22 kW in three-phase power supply.

The pump is fitted with a maintenance-free, mechanical shaft seal and single piece pump-motor shaft.

The pumps have axial suction port and radial discharge port.

Applications

- Fire fighting booster applications in
- Commercial Multistorey complexes
 - High Rise Residential Buildings
 - Warehouses and Godowns
 - Manufacturing plants

Features & benefits

- Following are the main features and benefits offered by the FLB pumps.
- Compact design
 - Easy and simple installation
 - User-friendly operation
 - Low noise level
 - Reliable and robust construction
 - Reliable water supply

Operating conditions

- Flow range : Up to 156 m³/h
- Head range : Up to 100 metres
- Ambient temperature : Max. +50°C
- Liquid temperature range : 0°C to +90°C

Pumped liquids

These pumps are designed and manufactured for pumping of clean water without any solids for fire fighting applications only.

Pump location

The pumps have been designed to operate in a nonaggressive and non-explosive atmosphere. The relative humidity should not exceed 95%.

Curve conditions

- The conditions below apply to the curves shown the following pages.
- Tolerances in accordance with ISO 9906 : 2012 3B.
 - Test results with clean cold water, without gas content. Measurements have been made with airless water at a temperature of 20°C.
 - Head and power values valid for liquids with density = 1.0 kg/dm³ & kinematic viscosity = max 1 mm²/s (1 cSt).
 - The QH curves apply to a rated motor speed of 2900 min⁻¹.
 - A safety margin of + 0.5 m is recommended for the NPSH value.

Motor

The pumps are coupled with Totally Enclosed Fan Cooled (TEFC) Induction Motors with the following characteristics

- Ratings : 3 phase - 2.2 to 22 kW
- Rated speed : 2900 rpm
- Enclosure class : IP 55
- Insulation class : F
- Standard voltage : 415 V, 3 phase
- Supply frequency : 50 Hz
- Duty / Rating : S1 / Continuous
- Direction of rotation : Clockwise as seen from the motor rear end.

Three-phase motors must be connected to a motor starter according to local regulations.

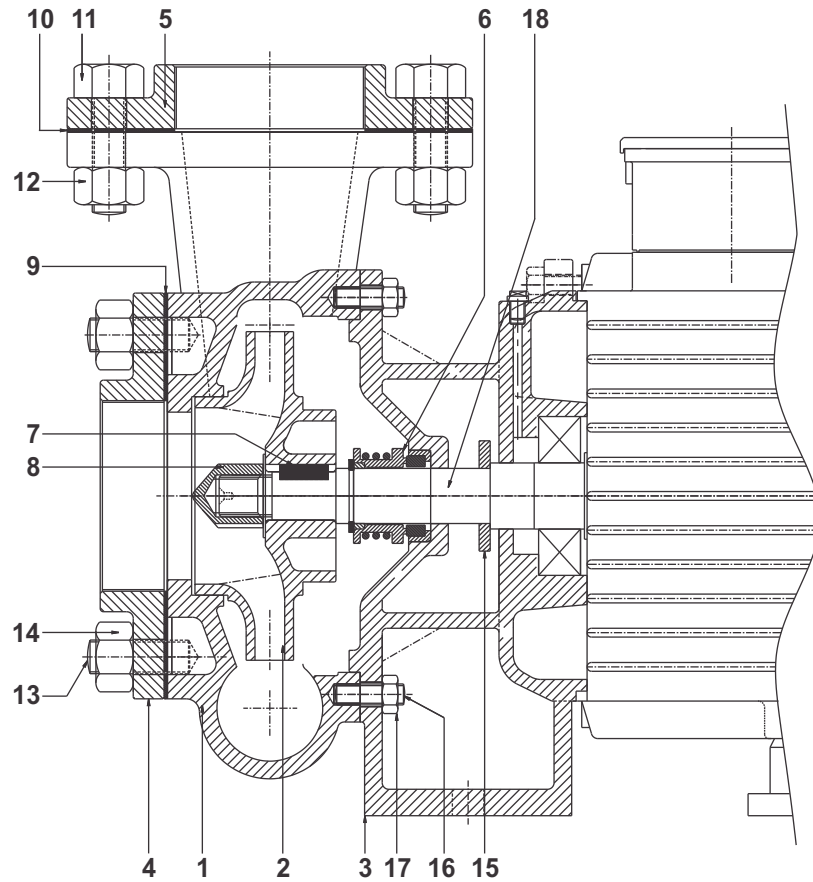
Type key - Fire Monoblock pump

FLBC/FLBB

Example : _____ **FLB C - 35**

Impeller Type C : Cast Iron B : Bronze
--

Sectional Drawing



Materials

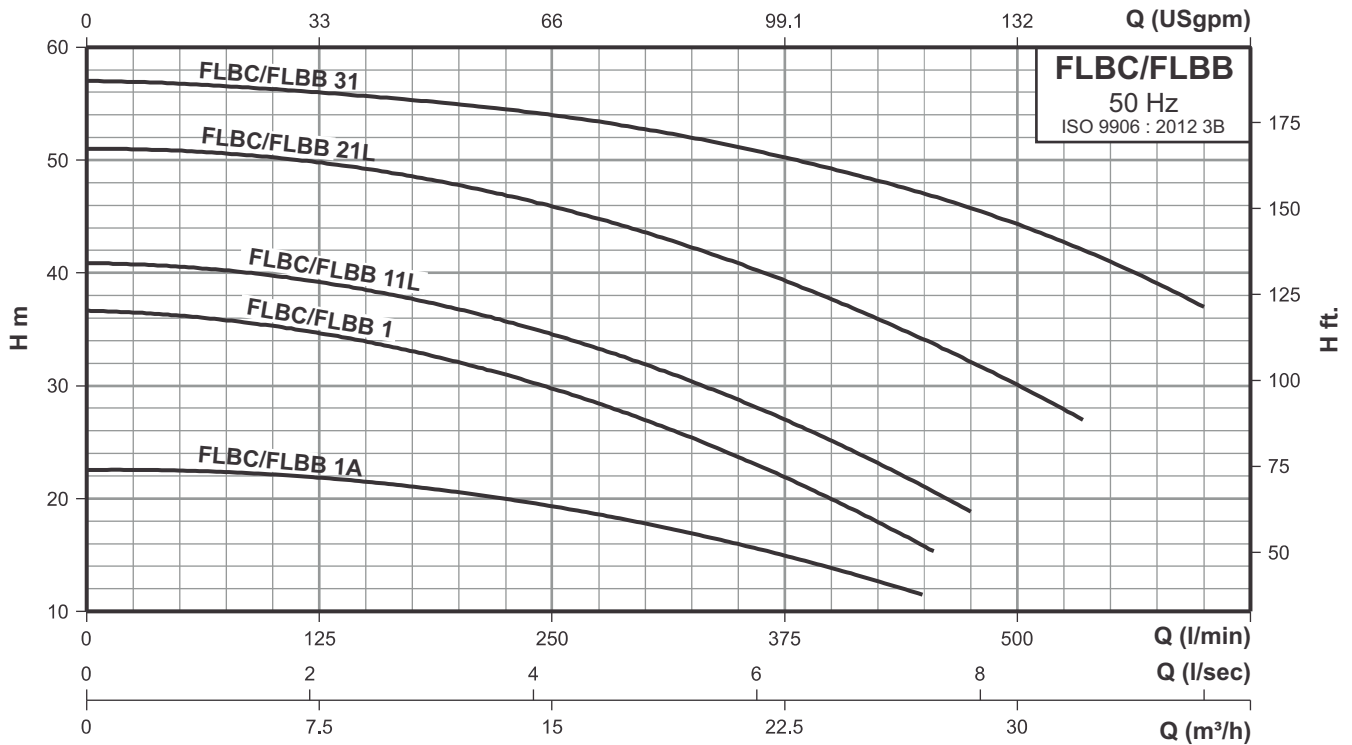
Pos.	Component	Material
1	Volute	Cast Iron
2	Impeller	Cast Iron / Bronze
3	Adaptor	Cast Iron
4	Suction flange	Cast Iron
5	Delivery flange	Cast Iron
6	Mechanical shaft seal	Carbon/Ceramic/NBR
7	Key	Carbon steel
8	Impeller nut	Brass
9	Flange rubber packing (suction)	Rubber
10	Flange rubber packing (delivery)	Rubber
11	Hex bolt	Carbon steel
12	Hex nut	Carbon steel
13	Stud	Carbon steel
14	Hex nut	Carbon steel
15	Water thrower	Rubber
16	Stud	Carbon steel
17	Hex nut	Carbon steel
18	Shaft	AISI 410



Technical data

Fire Monoblock Pump

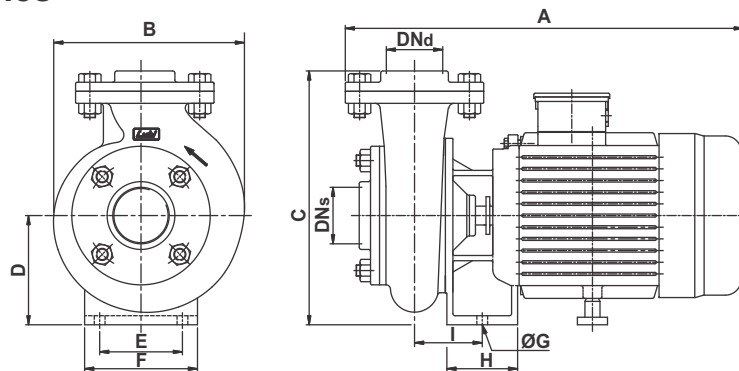
FLBC/FLBB 1A, 1, 11L, 21L, 31



Performance data at n = 2900 rpm

Model	Power		Q m³/h	15	21	24	27	33	36
	[kW]	[HP]							
Three-phase			Q l/min	250	350	400	450	550	600
FLBC/FLBB 1A	1.50	2.00	H mts.	19	16	14	-	-	-
FLBC/FLBB 1	2.20	3.00		30	24	20	16	-	-
FLBC/FLBB 11L	3.70	5.00		35	29	25	21	-	-
FLBC/FLBB 21L	5.50	7.50		46	41	38	34	26	-
FLBC/FLBB 31	7.50	10.0		54	51	49	47	41	37

Dimensional sketches



Dimensions & weights

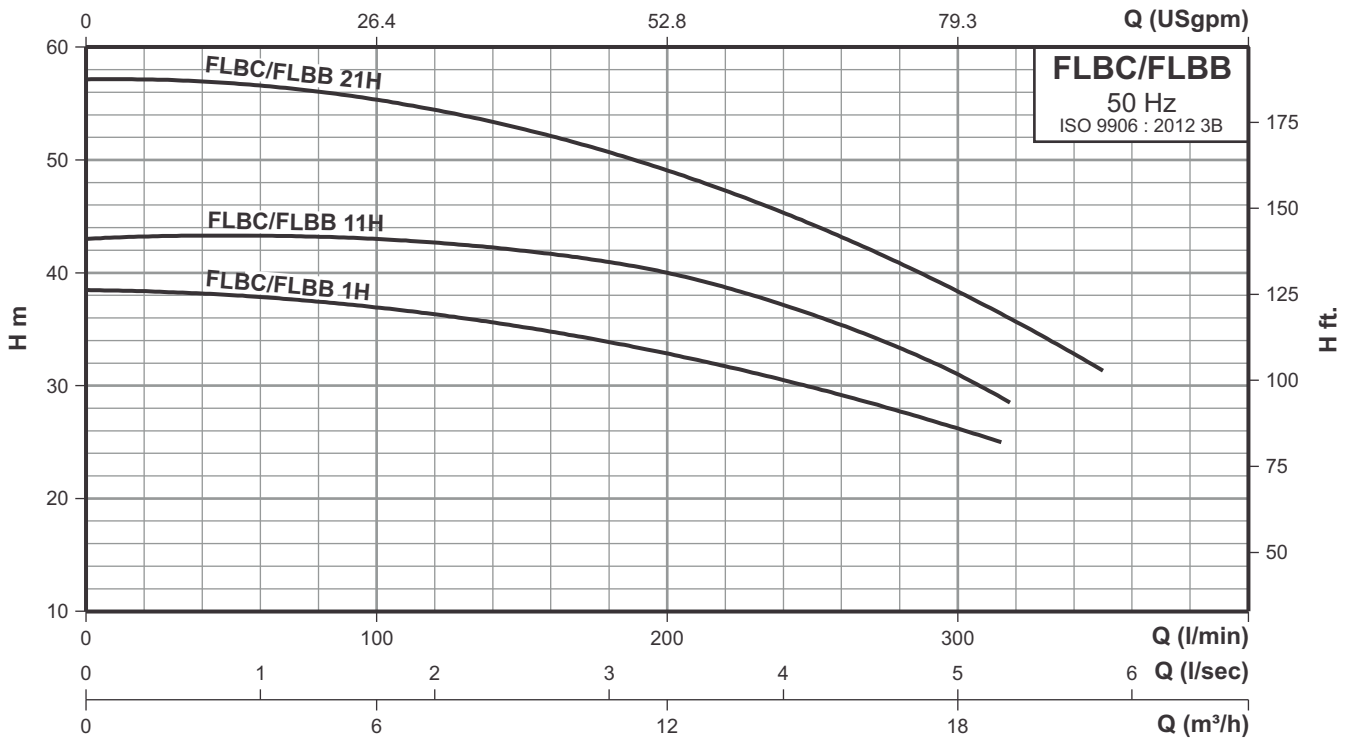
Model	Power		DNs	DNd	Dimensions [mm]									Gross weight [kg]	Gross volume [m³]
	[kW]	[HP]			A	B	C	D	E	F	ØG	H	I		
Three-phase															
FLBC/FLBB 1A	1.50	2.00	2"	2"	430	250	197	116	160	195	10	-	130	62.0	0.140
FLBC/FLBB 1	2.20	3.00	2"	1½"	460	228	318	135	110	150	14	82	79	77.0	0.162
FLBC/FLBB 11L	3.70	5.00	2"	1½"	495	228	328	145	110	150	14	94	83	88.0	0.162
FLBC/FLBB 21L	5.50	7.50	2"	1½"	540	289	375	160	146	200	14	101	91	116.0	0.209
FLBC/FLBB 31	7.50	10.0	2"	1½"	578	289	375	160	146	200	14	101	91	120.0	0.209

Note: All dimensions in mm unless otherwise noted.

Technical data

Fire Monoblock Pump

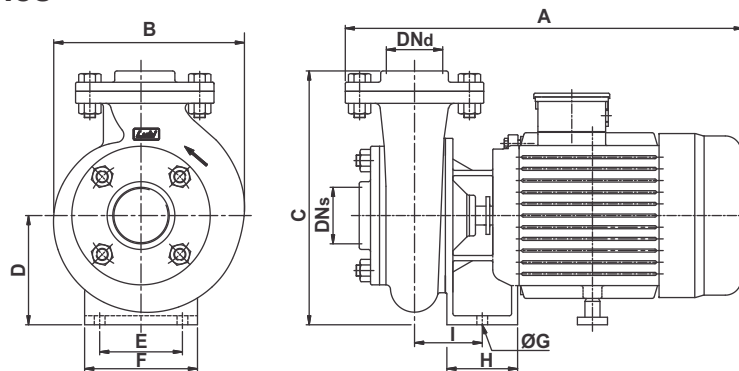
FLBC/FLBB 1H, 11H, 21H



Performance data at n = 2900 rpm

Model	Power		Q m³/h Q l/min	6	9	12	15	18	21
	[kW]	[HP]							
Three-phase									
FLBC/FLBB 1H	2.20	3.00	H	37	35	33	30	26	-
FLBC/FLBB 11H	3.70	5.00	mts.	43	42	40	37	31	-
FLBC/FLBB 21H	5.50	7.50		55	53	49	44	38	31

Dimensional sketches



Dimensions & weights

Model	Power		DNs	DNd	Dimensions [mm]									Gross weight [kg]	Gross volume [m³]
	[kW]	[HP]			A	B	C	D	E	F	ØG	H	I		
Three-phase															
FLBC/FLBB 1H	2.20	3.00	2"	1½"	464	245	343	145	145	190	14	85	87	78.0	0.162
FLBC/FLBB 11H	3.70	5.00	2"	1½"	499	245	343	145	145	190	14	94	87	89.0	0.162
FLBC/FLBB 21H	5.50	7.50	2"	1½"	540	289	375	160	146	200	14	101	91	116.0	0.209

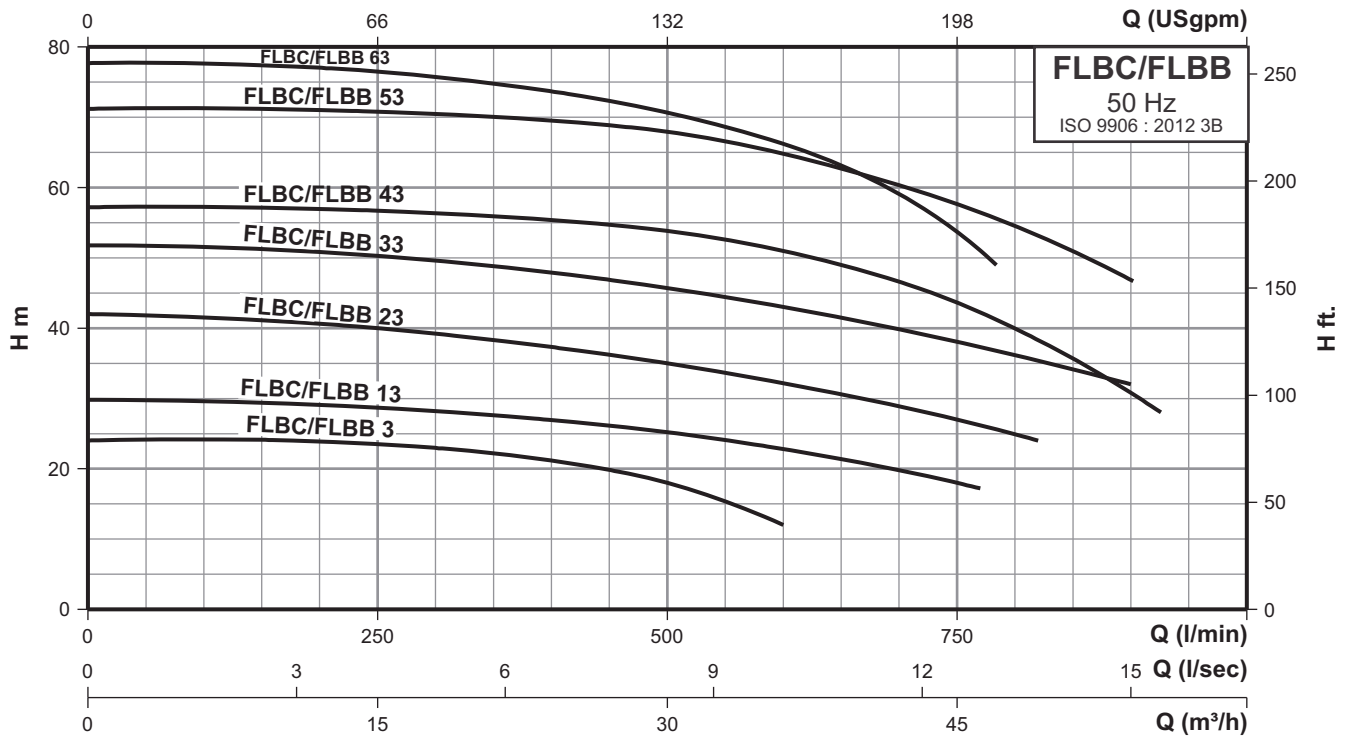
Note: All dimensions in mm unless otherwise noted.



Technical data

Fire Monoblock Pump

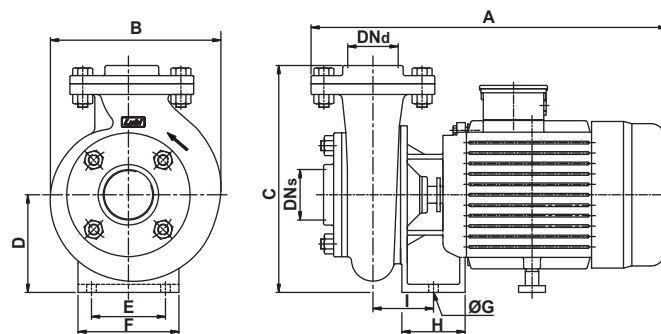
FLBC/FLBB 3, 13, 23, 33, 43, 53, 63



Performance data at n = 2900 rpm

Model	Power		Q m³/h	15	27	36	42	48	54
	[kW]	[HP]							
Three-phase			Q l/min	250	450	600	700	800	900
FLBC/FLBB 3	2.20	3.00	H mts.	23.5	19.8	12	-	-	-
FLBC/FLBB 13	3.70	5.00		29	25	23	20	-	-
FLBC/FLBB 23	5.50	7.50		40	35	32	29	25	-
FLBC/FLBB 33	7.50	10.0		50	47	43	40	36	32
FLBC/FLBB 43	9.30	12.5		56.8	54.8	51	46.7	39.7	30.7
FLBC/FLBB 53	11.0	15.0		70.8	68.8	64.8	60.3	54.8	47
FLBC/FLBB 63	15.0	20.0		76.3	72.4	66.3	59.4	-	-

Dimensional sketches



Dimensions & weights

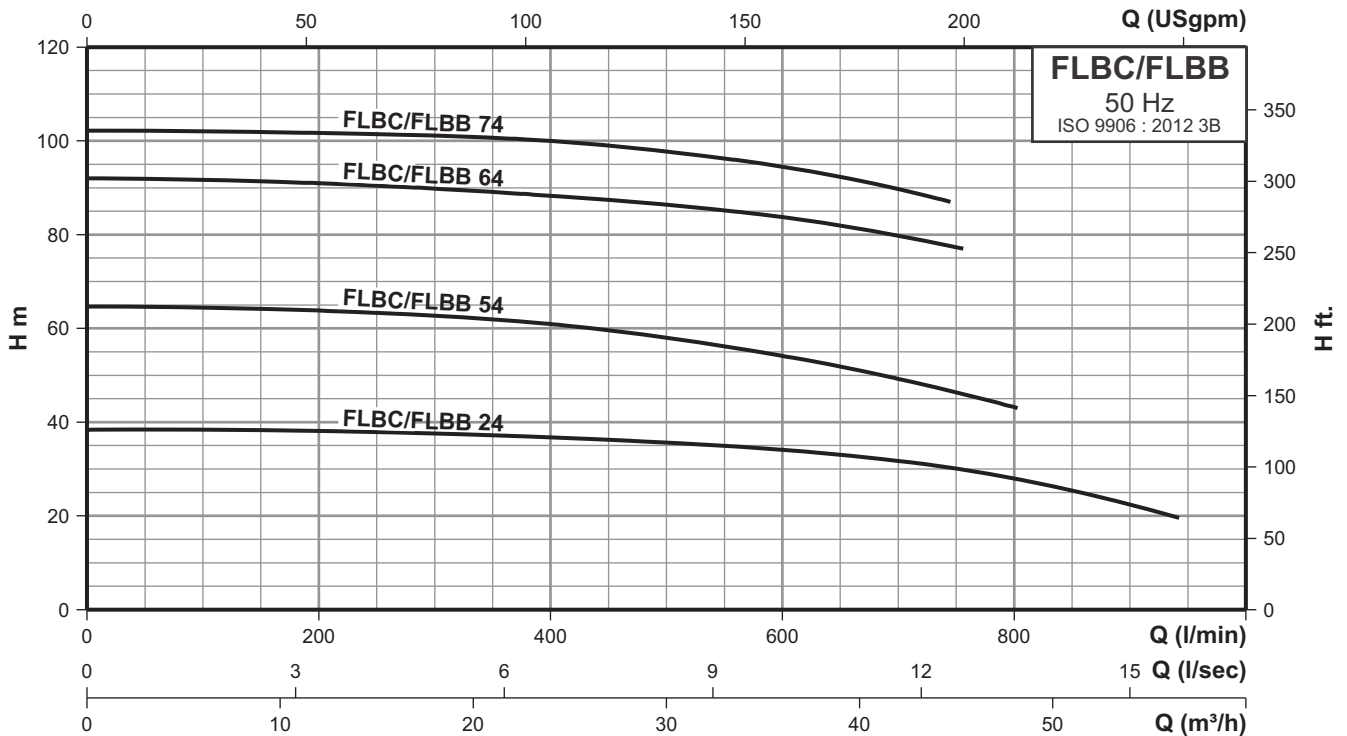
Model	Power		DNs	DNd	Dimensions [mm]									Gross weight [kg]	Gross volume [m³]
	[kW]	[HP]			A	B	C	D	E	F	ØG	H	I		
Three-phase															
FLBC/FLBB 3	2.20	3.00	2½"	2"	469	234	316	135	110	150	14	85	79	79.0	0.162
FLBC/FLBB 13	3.70	5.00	2½"	2"	504	234	326	145	110	150	14	94	83	90.0	0.162
FLBC/FLBB 23	5.50	7.50	2½"	2"	551	278	390	145	146	200	14	101	94	121.0	0.209
FLBC/FLBB 33	7.50	10.0	2½"	2"	589	278	390	160	146	200	14	101	94	125.0	0.209
FLBC/FLBB 43	9.30	12.5	2½"	2"	587	302	405	175	146	200	14	101	90	119.0	0.210
FLBC/FLBB 53	11.0	15.0	2½"	2"	587	302	405	175	146	200	14	101	90	120.0	0.210
FLBC/FLBB 63	15.0	20.0	2½"	2"	684	302	415	185	155	225	14	118	97	200.0	0.241

Note: All dimensions in mm unless otherwise noted.

Technical data

Fire Monoblock Pump

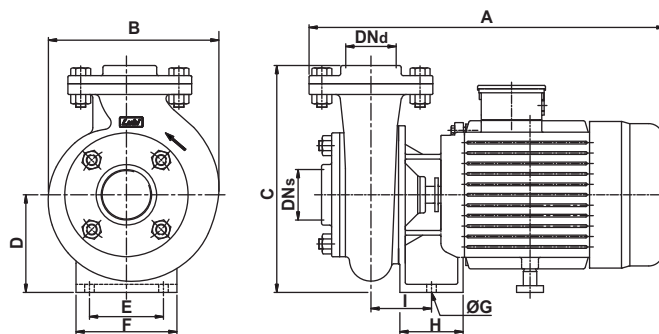
FLBC/FLBB 24, 54, 64, 74



Performance data at n = 2900 rpm

Model	Power		Q m³/h	12	24	36	42	48	54
	[kW]	[HP]		Q l/min	200	400	600	700	800
Three-phase			H mts.						
FLBC/FLBB 24	5.50	7.50		38	36.4	34	31.6	28	22.6
FLBC/FLBB 54	11.0	15.0		63.7	60.8	54	49.3	43.2	-
FLBC/FLBB 64	15.0	20.0		91	88.3	84	79.6	-	-
FLBC/FLBB 74	18.5	25.0		101.6	100.1	94.4	89.7	-	-

Dimensional sketches



Dimensions & weights

Model	Power		DN _s	DN _d	Dimensions [mm]										Gross weight [kg]	Gross volume [m³]
	[kW]	[HP]			A	B	C	D	E	F	ØG	H	I			
Three-phase																
FLBC/FLBB 24	5.50	7.50	2½"	2½"	553	246	370	160	146	200	14	101	90	121.0	0.209	
FLBC/FLBB 54	11.0	15.0	2½"	2½"	594	333	440	185	205	260	14	101	93	127.0	0.239	
FLBC/FLBB 64	15.0	20.0	2½"	2½"	692	333	440	185	205	260	14	118	100	208.0	0.270	
FLBC/FLBB 74	18.5	25.0	2½"	2½"	692	333	440	185	205	260	14	118	100	212.0	0.270	

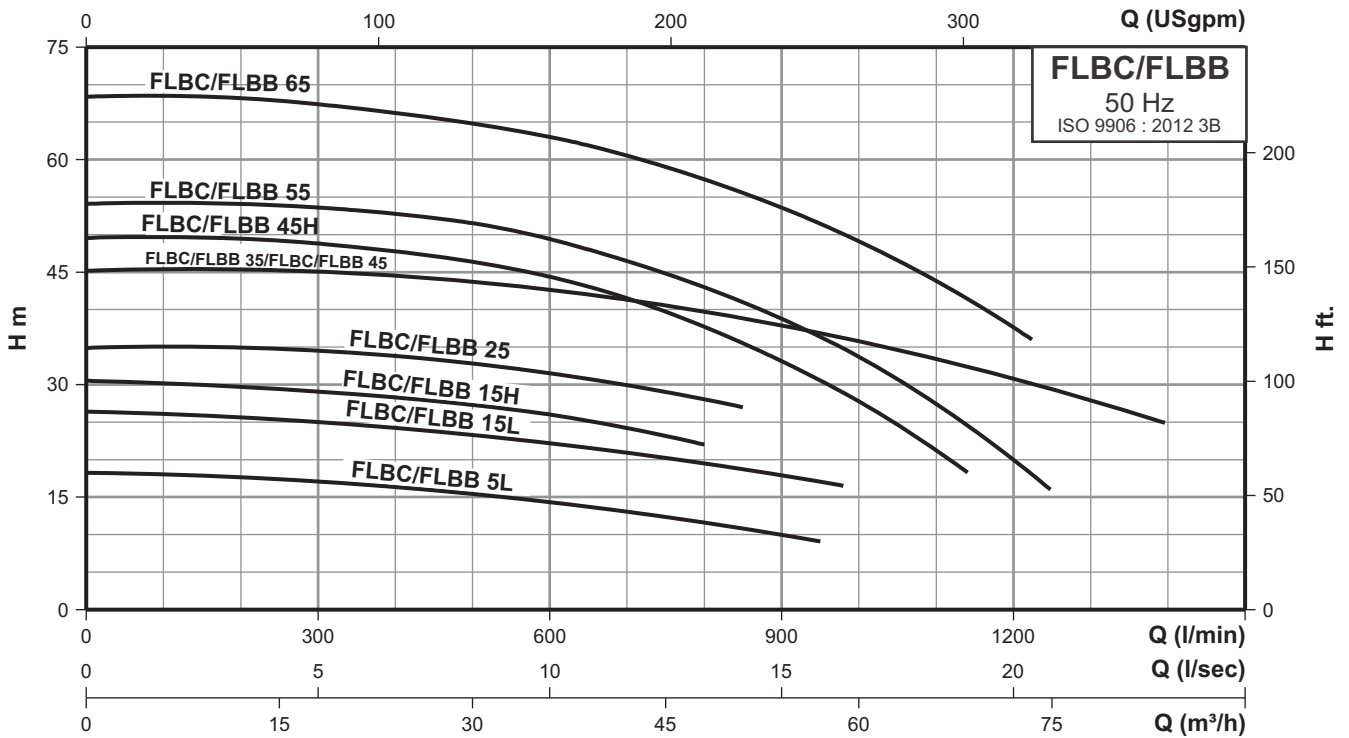
Note: All dimensions in mm unless otherwise noted.



Technical data

Fire Monoblock Pump

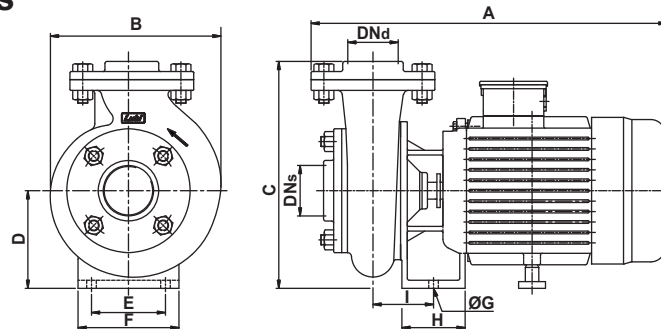
FLBC/FLBB 5L, 15L, 15H, 25, 35, 45, 45H, 55, 65



Performance data at n = 2900 rpm

Model	Power		Q m³/h	12	24	36	48	60	72
	[kW]	[HP]		Q l/min	200	400	600	800	1000
Three-phase			H mts.						
FLBC/FLBB 5L	2.20	3.00		18	16	14	12	-	-
FLBC/FLBB 15L	3.70	5.00		26	24	22	20	-	-
FLBC/FLBB 15H	3.70	5.00		30	29	26	22	-	-
FLBC/FLBB 25	5.50	7.50		35	34	32	28	-	-
FLBC/FLBB 35	7.50	10.0		45.4	44.5	42.2	39.7	36.2	30.8
FLBC/FLBB 45	9.30	12.5		45.4	44.5	42.2	39.7	36.2	30.8
FLBC/FLBB 45H	9.30	12.5		49.3	48	44.5	37.5	28	-
FLBC/FLBB 55	11.0	15.0		53.8	52.8	49.6	42.9	33.3	20
FLBC/FLBB 65	15.0	20.0		68.1	66.2	63	57.3	49	37.5

Dimensional sketches



Dimensions & weights

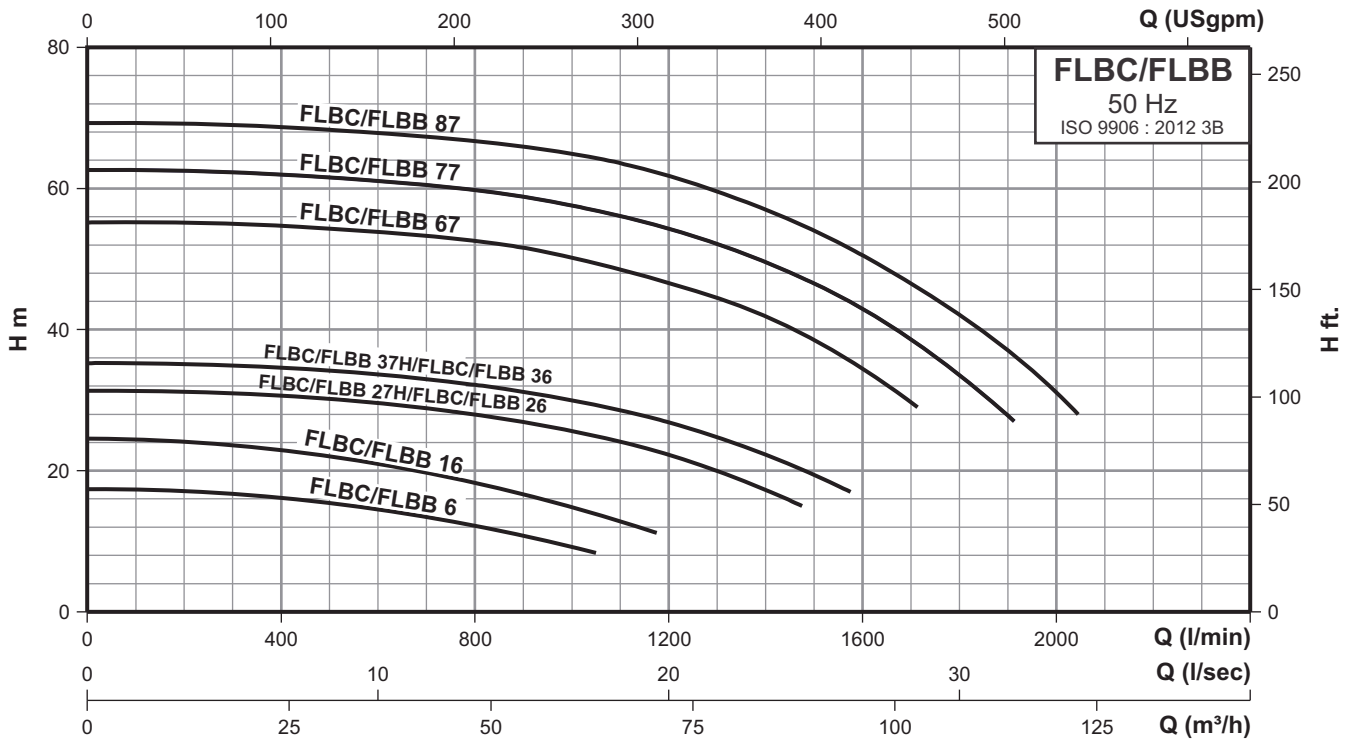
Model	Power		DNs	DNd	Dimensions [mm]									Gross weight [kg]	Gross volume [m³]
	[kW]	[HP]			A	B	C	D	E	F	ØG	H	I		
Three-phase															
FLBC/FLBB 5L	2.20	3.00	3"	2½"	492	254	330	135	110	150	14	84	86	85.0	0.162
FLBC/FLBB 15L	3.70	5.00	3"	2½"	527	254	340	145	110	150	14	94	90	93.0	0.162
FLBC/FLBB 15H	3.70	5.00	3"	2½"	513	239	330	145	110	150	14	94	85	93.0	0.162
FLBC/FLBB 25	5.50	7.50	3"	2½"	556	269	387	160	146	200	14	101	88	121.0	0.209
FLBC/FLBB 35	7.50	10.0	3"	2½"	594	269	387	160	146	200	14	101	91	125.0	0.209
FLBC/FLBB 45	9.30	12.5	3"	2½"	556	269	387	160	146	200	14	101	91	125.0	0.209
FLBC/FLBB 45H	9.30	12.5	3"	2½"	593	311	420	175	146	200	14	101	91	119.0	0.221
FLBC/FLBB 55	11.0	15.0	3"	2½"	593	311	420	175	146	200	14	101	91	120.0	0.221
FLBC/FLBB 65	15.0	20.0	3"	2½"	690	311	430	185	155	225	14	118	97	200.0	0.254

Note: All dimensions in mm unless otherwise noted.

Technical data

Fire Monoblock Pump

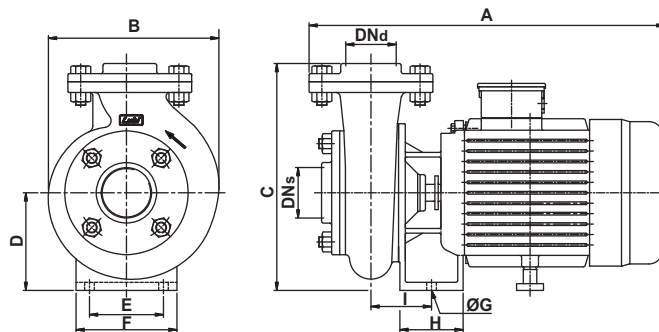
FLBC/FLBB 6, 16, 27H, 26, 37H, 36, 67, 77, 87



Performance data at n = 2900 rpm

Model	Power		Q m³/h	15	30	45	60	75	90	120
	[kW]	[HP]		Q l/min	250	500	750	1000	1250	1500
Three-phase			H mts.							
FLBC/FLBB 6	2.20	3.00		17	15.5	13	9	-	-	-
FLBC/FLBB 16	3.70	5.00		24	22	19	15	-	-	-
FLBC/FLBB 27H/FLBC/FLBB 26	5.50	7.50		31	30	28.5	25.5	21	-	-
FLBC/FLBB 37H/FLBC/FLBB 36	7.50	10.0		35	34	32.5	30	26	19	-
FLBC/FLBB 67	15.0	20.0		55	54.5	52.8	50.2	45.5	38.6	-
FLBC/FLBB 77	18.5	25.0		62.5	61.5	60.2	57.6	53	46.7	-
FLBC/FLBB 87	22.0	30.0		69	68	67.2	65	60.8	54.1	31

Dimensional sketches



Dimensions & weights

Model	Power		DN _s	DN _d	Dimensions [mm]									Gross weight [kg]	Gross volume [m³]
	[kW]	[HP]			A	B	C	D	E	F	ØG	H	I		
Three-phase															
FLBC/FLBB 6	2.20	3.00	3"	3"	492	254	330	135	110	150	14	85	86	86.0	0.162
FLBC/FLBB 16	3.70	5.00	3"	3"	527	254	340	145	110	150	14	94	90	94.0	0.162
FLBC/FLBB 27H	5.50	7.50	4"	3"	568	278	391	160	146	200	14	101	95	124.0	0.209
FLBC/FLBB 26	5.50	7.50	3"	3"	568	278	391	160	146	200	14	101	95	124.0	0.209
FLBC/FLBB 37H	7.50	10.0	4"	3"	606	278	391	160	146	200	14	101	95	128.0	0.209
FLBC/FLBB 36	7.50	10.0	3"	3"	606	278	391	160	146	200	14	101	95	128.0	0.209
FLBC/FLBB 67	15.0	20.0	4"	3"	704	313	447	185	155	225	14	118	100	208.0	0.266
FLBC/FLBB 77	18.5	25.0	4"	3"	704	313	447	185	155	225	14	118	100	212.0	0.266
FLBC/FLBB 87	22.0	30.0	4"	3"	704	313	447	185	155	225	14	118	100	215.0	0.266

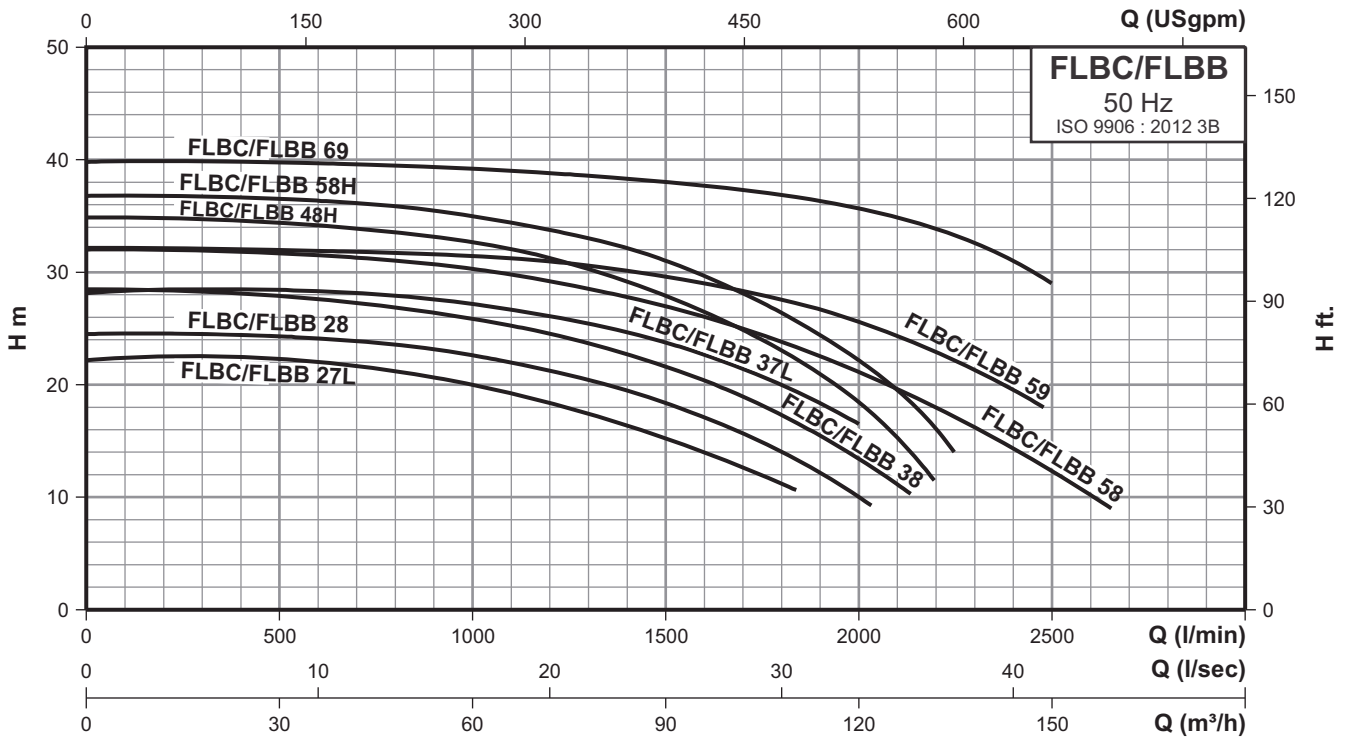
Note: All dimensions in mm unless otherwise noted.



Technical data

Fire Monoblock Pump

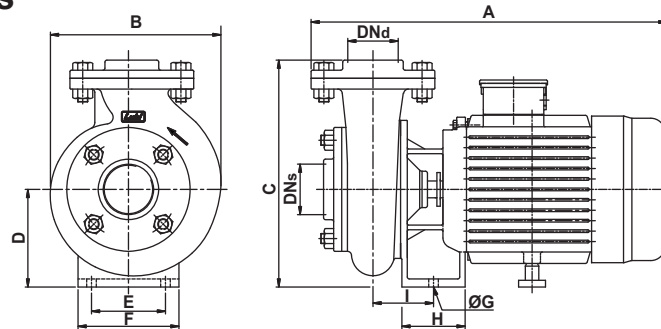
FLBC/FLBB 27L, 28, 37L, 38, 48H, 58, 58H, 59, 69



Performance data at n = 2900 rpm

Model	Power		Q m³/h	15	30	60	90	120	150
	[kW]	[HP]							
Three-phase			Q l/min	250	500	1000	1500	2000	2500
FLBC/FLBB 27L	5.50	7.50	H mts.	22.5	22.3	20.0	15.2	-	-
FLBC/FLBB 28	5.50	7.50		24.5	24.2	22.6	18.2	10	-
FLBC/FLBB 37L	7.50	10.0		28.3	28.3	27.2	23.9	16.5	-
FLBC/FLBB 38	7.50	10.0		28.4	27.8	25.8	21.6	13.3	-
FLBC/FLBB 48H	9.30	12.5		34.8	34.5	32.7	27.8	18.5	-
FLBC/FLBB 58	11.0	15.0		32	31.5	29.6	26.8	21.3	12.5
FLBC/FLBB 58H	11.0	15.0		36.8	36.4	35	31	22.3	-
FLBC/FLBB 59	11.0	15.0		32.1	32	31.4	29.6	25.7	-
FLBC/FLBB 69	15.0	20.0		39.8	39.7	39.1	38	35.7	29

Dimensional sketches



Dimensions & weights

Model	Power		DNs	DNd	Dimensions [mm]									Gross weight [kg]	Gross volume [m³]
	[kW]	[HP]			A	B	C	D	E	F	ØG	H	I		
FLBC/FLBB 27L	5.50	7.50	4"	3"	568	278	391	160	146	200	14	101	95	124.0	0.209
FLBC/FLBB 28	5.50	7.50	4"	4"	630	273	396	160	146	200	14	101	103	127.0	0.209
FLBC/FLBB 37L	7.50	10.0	4"	3"	606	278	391	160	146	200	14	101	95	128.0	0.209
FLBC/FLBB 38	7.50	10.0	4"	4"	606	273	396	160	146	200	14	101	103	131.0	0.209
FLBC/FLBB 48H	9.30	12.5	4"	4"	629	281	428	175	146	200	14	101	102	126.0	0.219
FLBC/FLBB 58	11.0	15.0	4"	4"	631	330	425	175	146	200	14	101	100	150.0	0.250
FLBC/FLBB 58H	11.0	15.0	4"	4"	629	281	428	175	146	200	14	101	102	128.0	0.219
FLBC/FLBB 59	11.0	15.0	5"	5"	650	298	463	175	146	225	14	101	103	131.0	0.247
FLBC/FLBB 69	15.0	20.0	5"	5"	750	298	473	185	155	225	14	118	109	211.0	0.281

Note: All dimensions in mm unless otherwise noted.

LUBI INDUSTRIES LLP

Near Kalyan Mills, Naroda Road, Ahmedabad-380 025, INDIA.
Phone : +91 - 79 - 61700100, Fax No. :+91 - 79 - 61700399.

Sales Enquiries: indsales@lubipumps.com, expsales@lubipumps.com

www.lubipumps.com

Product Improvement is a continuous process at 'LUBI'. The data given in this publication is therefore subject to revision.

00.00.101020.0198



ISO 9001



ISO 14001

Customer Care Number : 09824200800