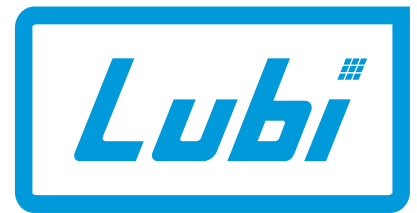
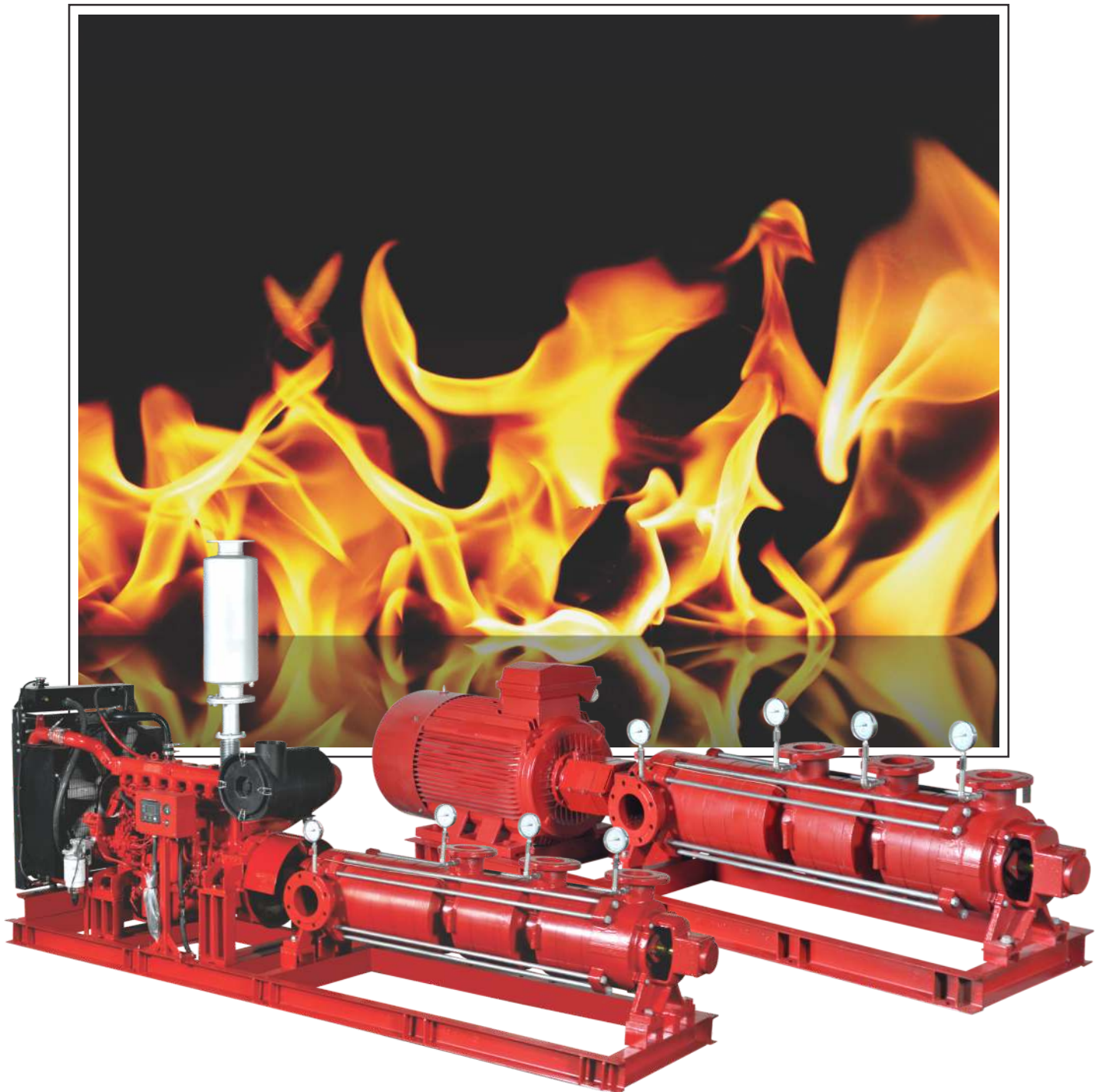


LMM SERIES

**Multi Stage Multi Outlet Fire Pumps
50 Hz**

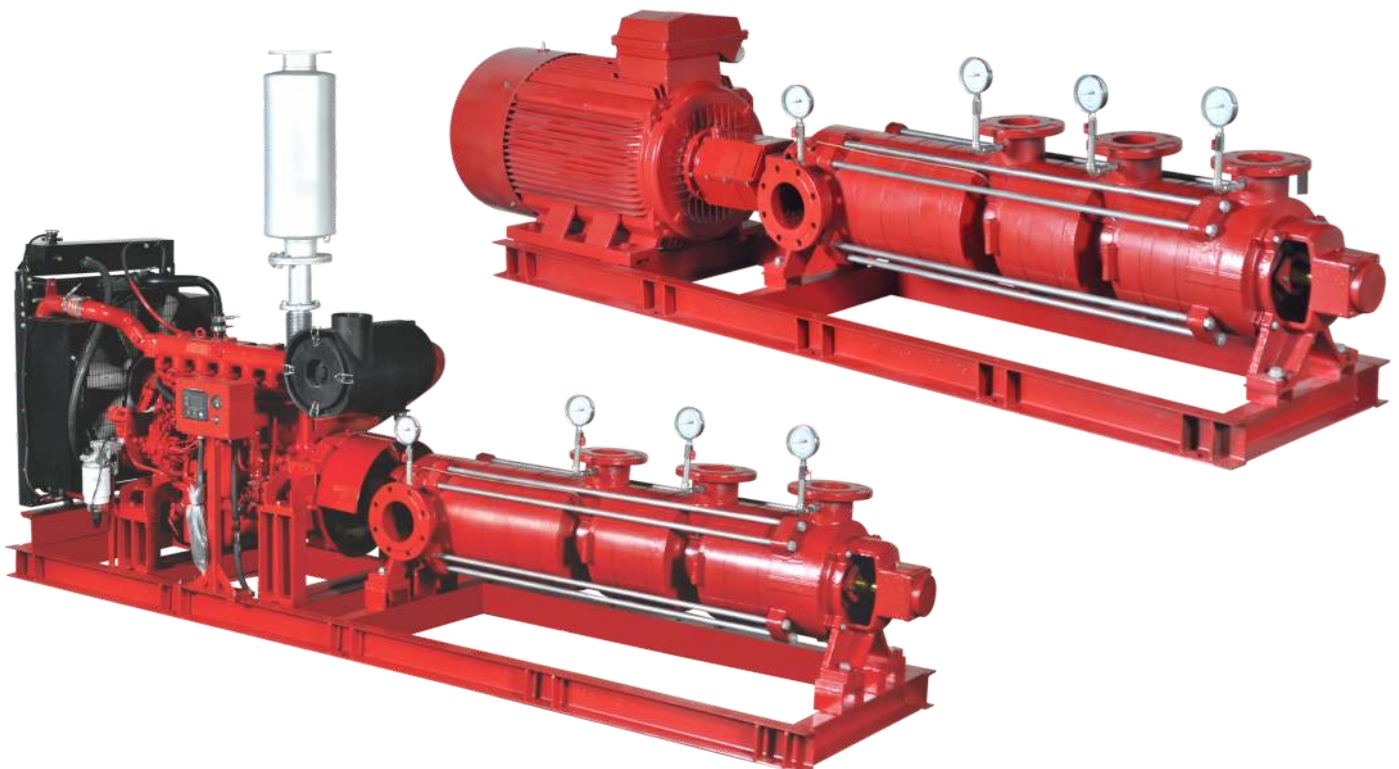


Passion for Pumps

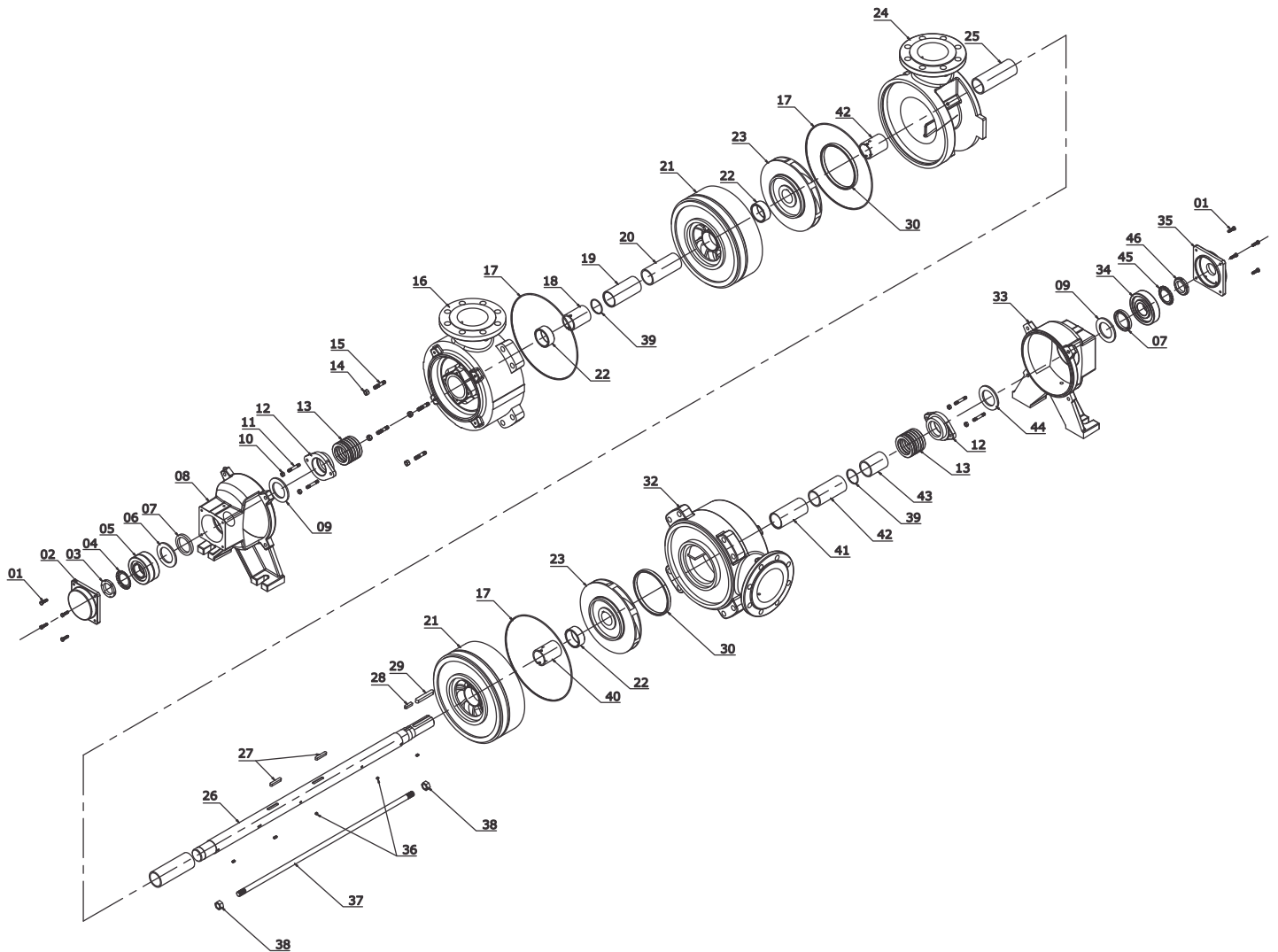


SALIENT FEATURES

- ❑ The Lubi LMM pumps have been designed and developed for high pressure fire fighting operation in multi storeyed buildings.
- ❑ The multi outlet feature allows the same pump to deliver water at different heads which reduces the necessity of multiple pumps for fire fighting in multi-storeyed buildings.
- ❑ The Pump Diffuser Casings, Impellers as well as Suction and Delivery Housings are optimally designed and developed using Computational Fluid Dynamic (CFD) Software.
- ❑ All Pump Castings including Diffuser Casings, and Bearing Housings are made of High Strength Cast Iron (Grade FG260) or Ductile Iron to ensure that they can work in extreme field conditions.
- ❑ The Suction Flange can be oriented Left, Right, or Top as viewed from the driving end of the pump.
- ❑ The Delivery Flange is designed for Top discharge but can be oriented Left or Right on request.
- ❑ The Impellers are dynamically balanced to grade 6.3 of ISO 1940. They have been designed to balance the Axial Thrust Load offered by the pump.
- ❑ The Pump Shaft is of high tensile carbon steel or stainless steel, and is sized to withstand the radial thrust offered by the rotating assembly and also to deliver the rotating power to the impellers without deflection. The Pump Shaft is protected by Stainless Steel Shaft Sleeves in-between the impellers and also in the stuffing box area.
- ❑ The supporting bearings on the pumps have been selected to work in extreme conditions. They are grease lubricated.
- ❑ The suction side stuffing box is cooled by a cooling tube which bring a small amount of pressurised water from a few stages downstream.
- ❑ The standard direction of rotation is clockwise as viewed from the driving end.
- ❑ The Pumps are duly painted Red with RAL 3006 for fire fighting application.
- ❑ The Pumps are assembled on a baseplate with Motor or Diesel Engine and coupled at the factory.
- ❑ They are factory tested before dispatch to ensure proper performance and trouble free working at the site.

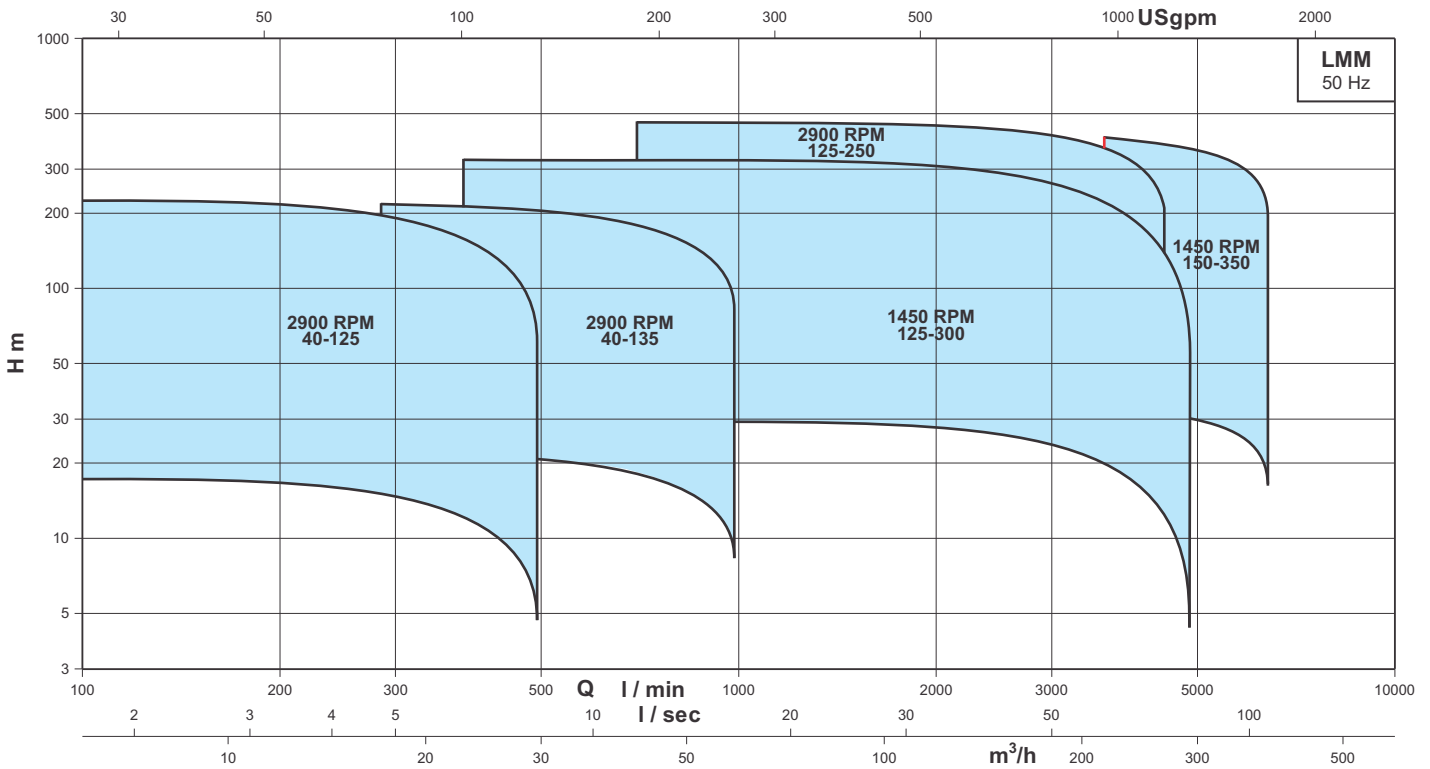


EXPLODED VIEW



SPARE PART LIST

PART NO.	PARTS NAME	PART NO.	PARTS NAME
01	HEX BOLT	25	SLEEVE (CENTER DELIVERY CHAMBER)
02	REAR BEARING COVER	26	SHAFT
03	LOCKING NUT (NDE)	27	KEY (IMPELLER)
04	LOCKING WASHER (NDE)	28	KEY (SLEEVE)
05	BEARING (NDE)	29	KEY (COUPLE)
06	BEARING WASHER (NDE)	30	WEAR RING
07	OIL SEAL	32	SUCTION CHAMBER
08	REAR BEARING HOUSING	33	FRONT BEARING HOUSING
09	WATER THROWER	34	BEARING (DE)
10	HEX NUT	35	FRONT BEARING COVER
11	STUD	36	KEY (SLEEVE)
12	GLAND	37	STUD
13	GRAPHITE PACKING	38	HEX NUT
14	HEX NUT	39	'O' RING
15	STUD	40	SLEEVE (BOWL)
16	DELIVERY CHAMBER WITH BUSH	41	SLEEVE (SUCTION CHAMBER)
17	'O' RING	42	SLEEVE (GLAND) (DE)
18	SLEEVE (NDE)	43	SLEEVE (DE)
19	SLEEVE (GLAND) (NDE)	44	BEARING WASHER (DE)
20	SLEEVE (DELIVERY CHAMBER)	45	LOCKING WASHER (DE)
21	BOWL WITH WEAR RING AND BUSH	46	LOCKING NUT (DE)
22	BUSH		
23	IMPELLER		
24	CENTER DELIVERY CHAMBER		



LUBI INDUSTRIES LLP

Near Kalyan Mills, Naroda Road, Ahmedabad-380 025, INDIA.

Phone : +91 - 79 - 61700100, Fax No. :+91 - 79 - 61700399.

Sales Enquiries: indsales@lubipumps.com

www.lubipumps.com

Product Improvement is a continuous process at 'LUBI'. The data given in this publication is therefore subject to revision.

00.00.010718.0169



ISO 9001



ISO 14001

Customer Care Number : 9824200800